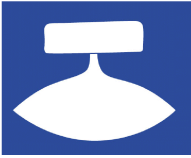


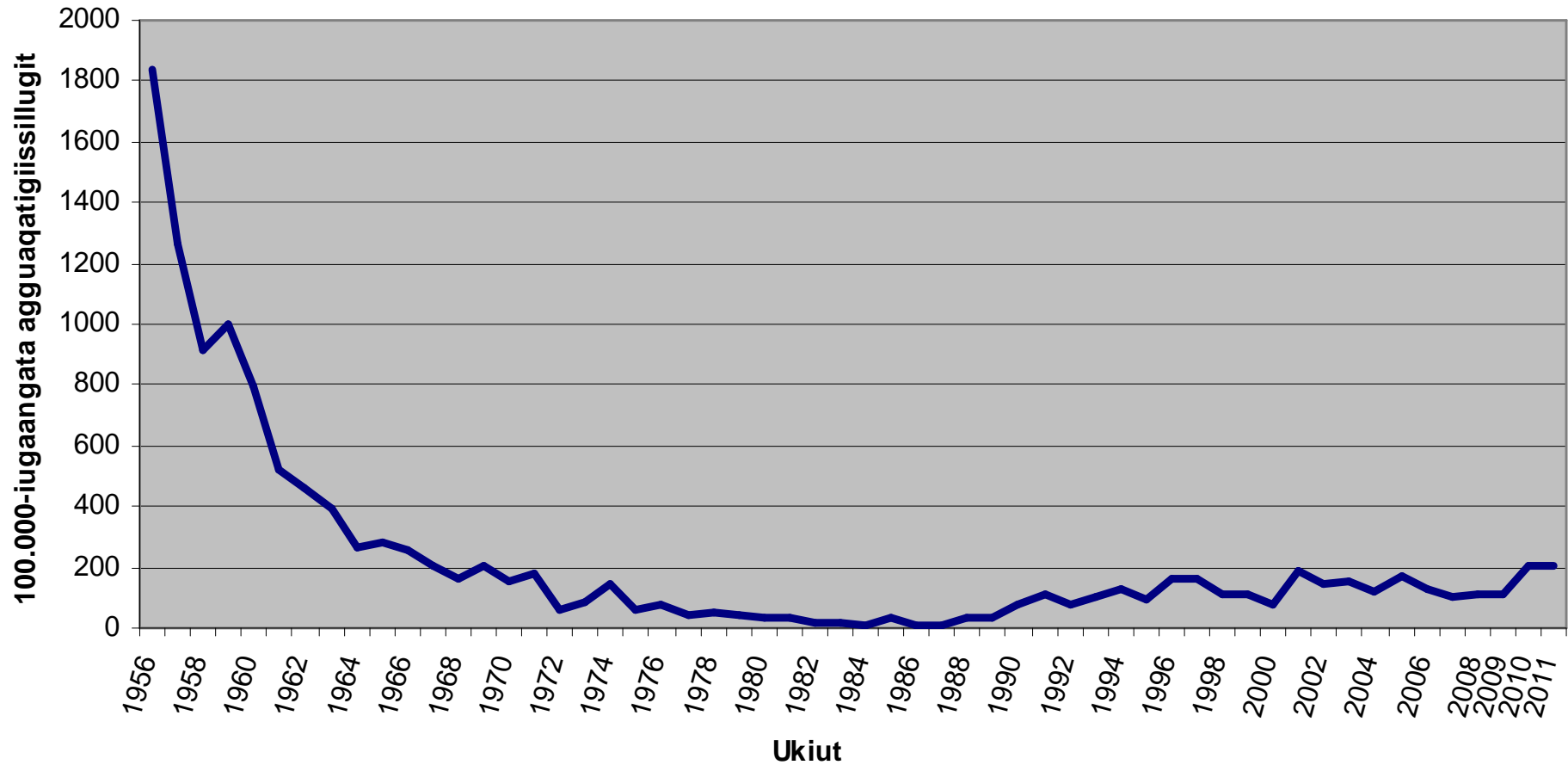


Nunatsinni Nakorsaaneqarfik
Landslægeembedet
The National Board of Health

A Country Update from Greenland

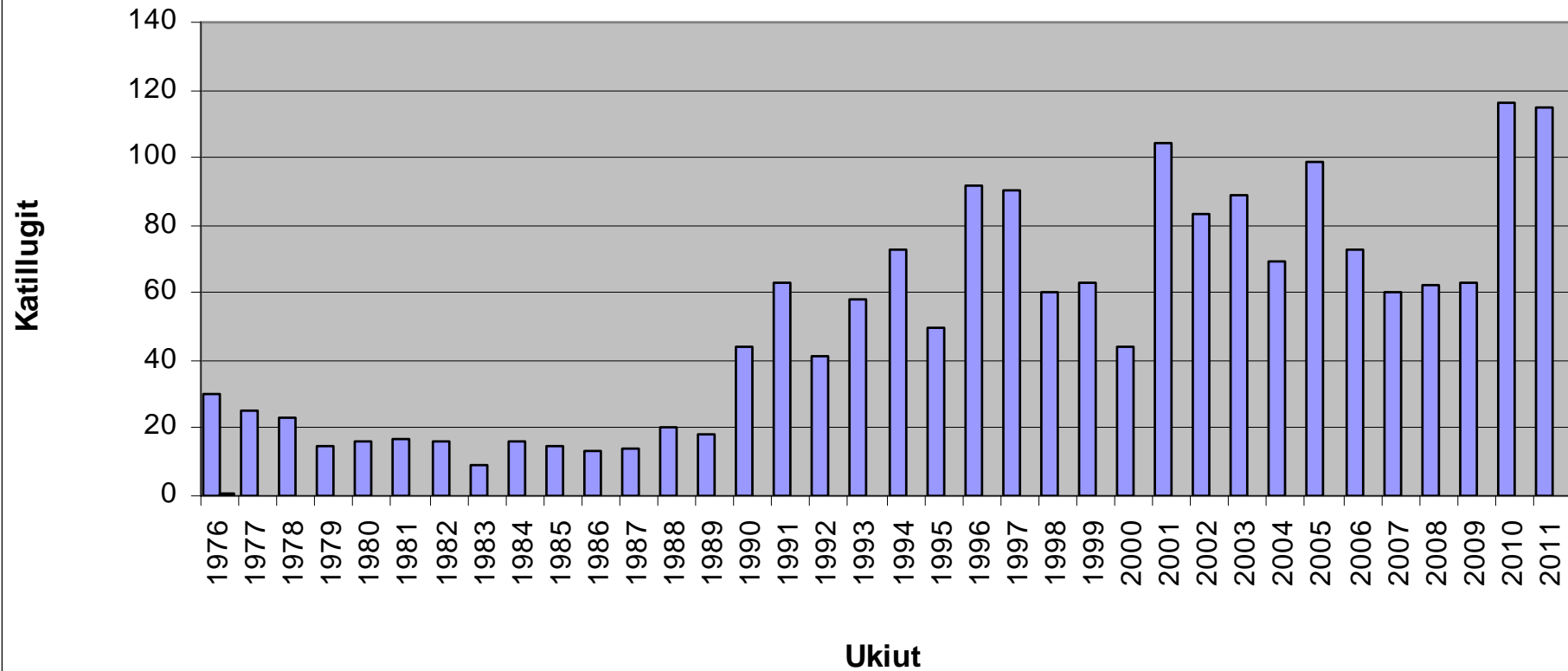


1956 - 2011 Tuberculosis Incidence





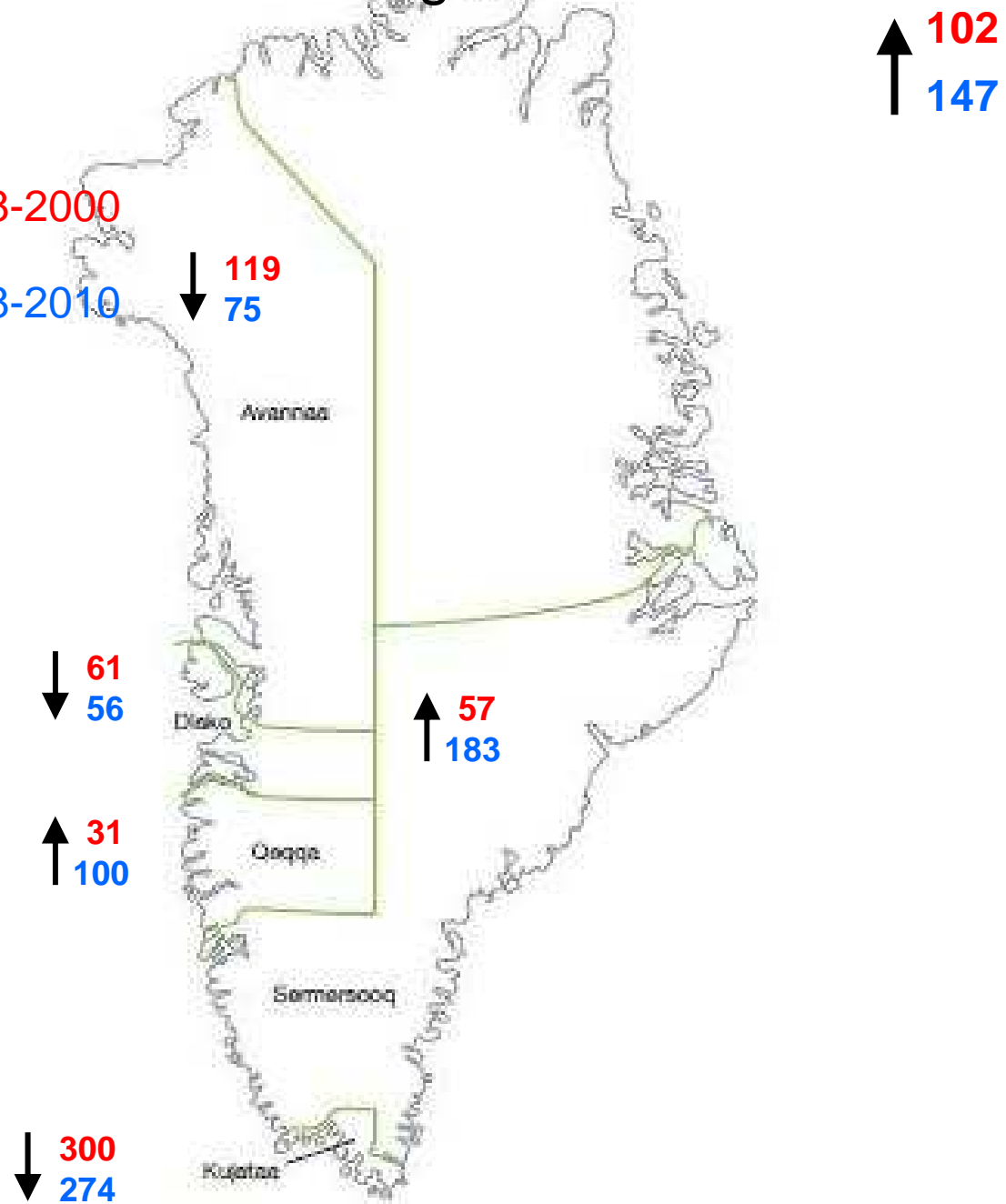
1976 - 2010 Kalaallit Nunnaanni Tuberkulose-rtut nalunaarutigineqarsimasut



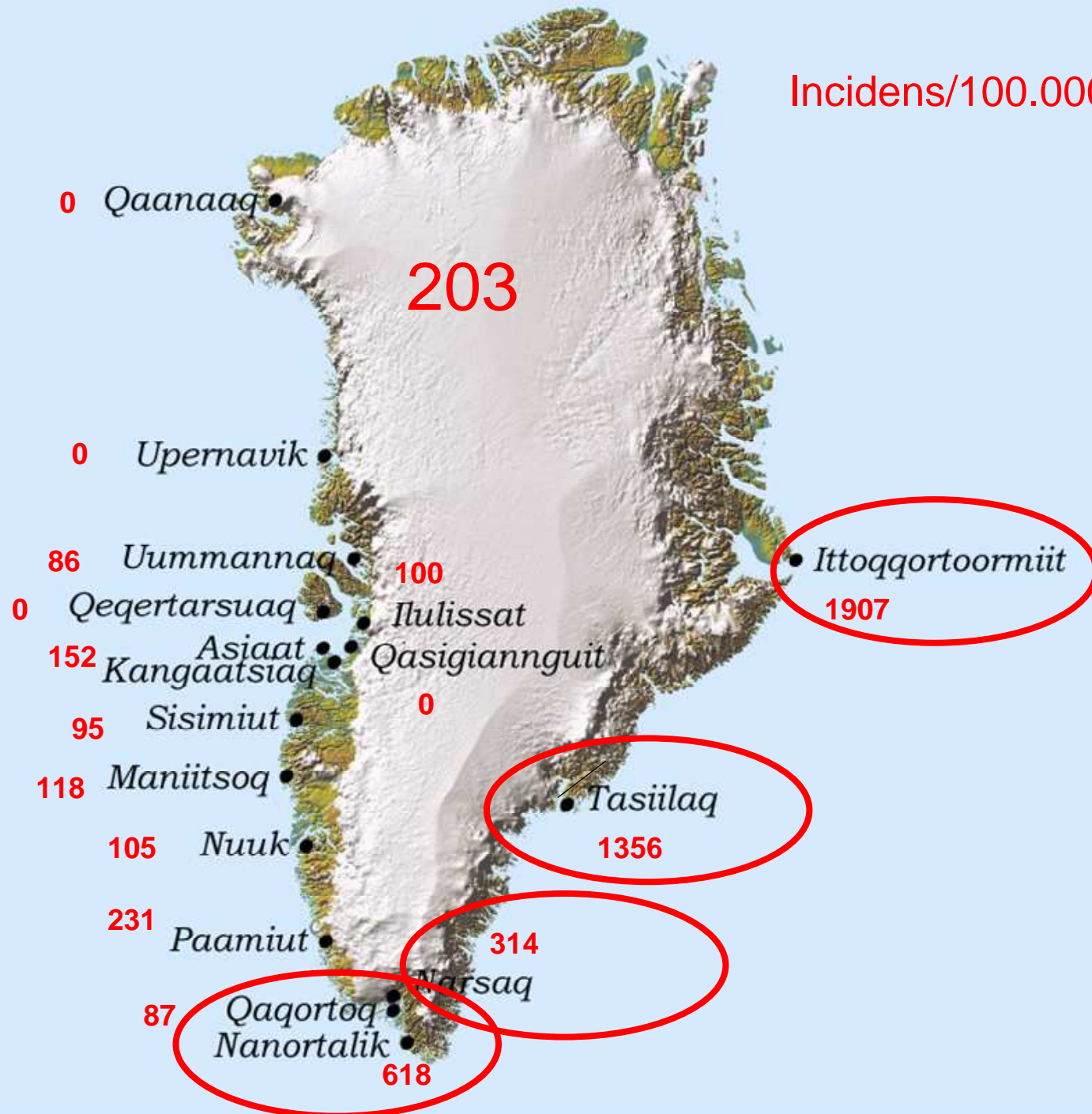
Anmeldte TB-tilfælde/Sundhedsregion

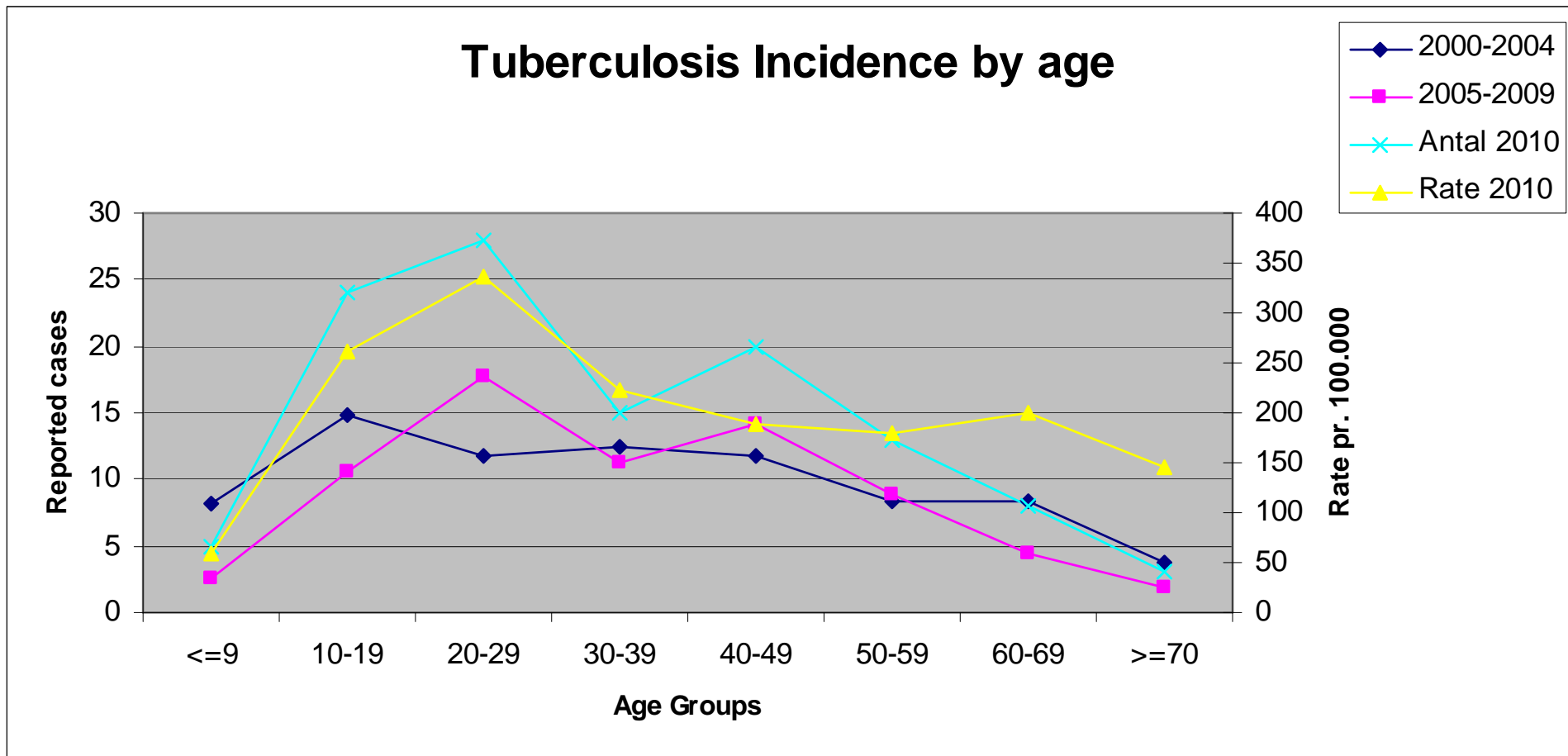
Incidence/100.000 1998-2000

Incidence/100.000 2008-2010



Incidents/100.000 2011







- A new and fully funded TB – strategy
 - not yet implemented
- National TB Strategy Group
 - aims to include tuberculosis in all major political decisions in Greenland

- Basically all TB-personel has changed



Nunatsinni Nakorsaaneqarfik
Landslægeembedet
The National Board of Health

Thank you